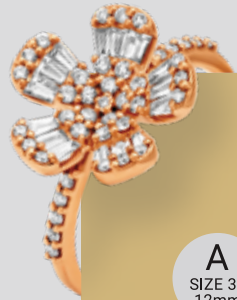


# Ring Size Guide

Want to find the perfect fit? This guide is sure to help.

Take a printout of this guide on an A4 Sheet and follow one of the two methods of measurement to get an accurate reading.

Place a Credit Card along the line below. If it's aligned, the guide has been printed perfectly!



## Method 1

<b>A</b> SIZE 38 12mm	<b>B</b> SIZE 39 12.4mm	<b>C</b> SIZE 40 12.8mm	<b>D</b> SIZE 41 13.2mm	<b>E</b> SIZE 43 13.6mm	<b>F</b> SIZE 38 14mm	<b>G</b> SIZE 39 14.4mm	<b>H</b> SIZE 40 14.8mm	<b>I</b> SIZE 41 15.2mm
<b>J</b> SIZE 43 15.6mm	<b>K</b> SIZE 43 16mm	<b>L</b> SIZE 43 16.8mm	<b>M</b> SIZE 43 16.4mm	<b>N</b> SIZE 43 17.2mm	<b>O</b> SIZE 38 17.6mm	<b>P</b> SIZE 39 18mm	<b>Q</b> SIZE 40 18.4mm	<b>R</b> SIZE 41 18.8mm
<b>S</b> SIZE 43 19.1mm	<b>T</b> SIZE 43 19.5mm	<b>U</b> SIZE 43 19.9mm	<b>V</b> SIZE 38 20.4mm	<b>W</b> SIZE 39 20.7mm	<b>X</b> SIZE 40 21.1mm	<b>Y</b> SIZE 41 21.5mm	<b>Z</b> SIZE 43 21.9mm	

- ♂ Place a ring that fits you, on the circles\*.
- ♂ Try different circles till the ring sits on the circle perfectly.
- ♂ Should your perfect fit fall between two sizes, please choose the larger one.

\*The dimensions mentioned are inner diameters.

## Method 2 | Tanishq's Ring Ruler

With this ruler, you can measure your size and bring home the ring of your dreams!

- ♂ Carefully cut out the ruler given below, including the line in the middle, creating a slit.
- ♂ Take the ruler and wrap it around your finger, like a belt.
- ♂ Don't pull too tight. The ruler needs to fit comfortably.
- ♂ Pick a size that's easy to put on and take off.



If your size is in between digits, please choose the larger measurement, just to be safe.